

WHAT'S ON AT ARTSCIENCE MUSEUM

May/June 2017



Jules de Balincourt, *Space Investors*, 2015. Photo: Philippe Servent.
Courtesy of Galerie Thaddaeus Ropac, Paris/Salzburg.



**ArtScience
Museum**
MARINA BAY SANDS

WELCOME TO ARTSCIENCE MUSEUM



HOW TO GET HERE



MRT
Bayfront Station (10-minute walk)



BUS
Bus stop at Bayfront Avenue
SBS: 97, 97E, 133, 133M, 502, 518, SMRT: 106



TAXI
Pick-up and drop-off near The Shoppes at Marina Bay Sands®



CAR
The nearest car park is the North Car Park at Marina Bay Sands

Complimentary self-parking on Monday - Thursday from 10am - 4pm with \$100 spent at ArtScience Museum (up to 2 combined receipts). Redeem by 5pm at ArtScience Museum Box Office or Level B2 Concierge at The Shoppes.

TICKETING INFORMATION

For tickets, visit MarinaBaySands.com/ArtScienceMuseum, any Marina Bay Sands Box Office, or call +65 6688 8826. Tickets are also available at all SISTIC channels.

Opening hours: Daily 10am - 7pm (last admission: 6pm)
MarinaBaySands.com/ArtScienceMuseum

[ArtScienceMuseumSG](https://www.instagram.com/ArtScienceMuseumSG) | [ArtScienceMuseum](https://www.facebook.com/ArtScienceMuseum) | [ArtSciMuseum](https://twitter.com/ArtSciMuseum)

The iconic lotus-inspired ArtScience Museum at Marina Bay Sands is a living and breathing embodiment of Art and Science.

Through exhibitions, events, performances and educational activities, the Museum explores creative processes at the heart of art, science, technology and culture, and their far-reaching influence in the world we live in.

Since its opening in 2011, it has been home to some of the most renowned exhibitions including *Titanic: The Artifact Exhibition*, *Andy Warhol: 15 Minutes Eternal*, *Da Vinci: Shaping the Future* and *DreamWorks Animation: The Exhibition*.



ArtScience Museum was awarded TripAdvisor's Certificate of Excellence in 2015.

All information is correct at the time of print and is subject to change.



MCI [P] 113/06/2016

Printed on eco-friendly paper with soy-based ink.

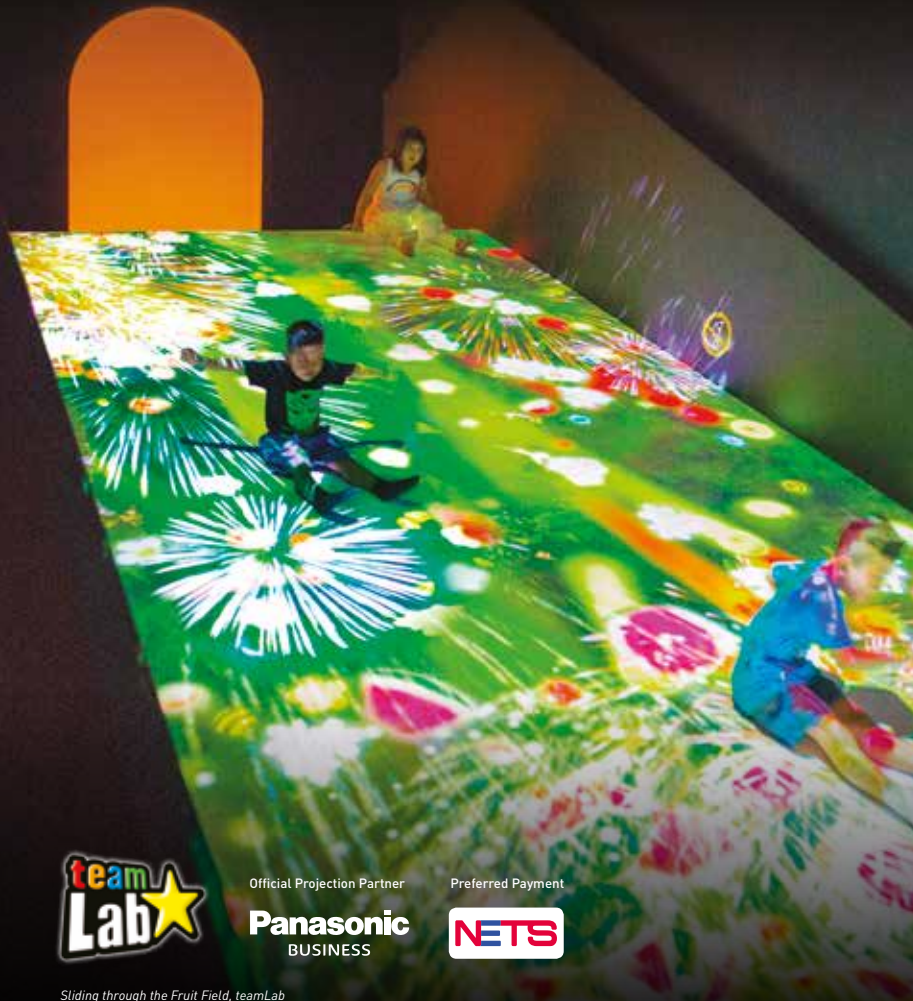
ArtScience Museum is a smoke-free property.

FUTURE WORLD

WHERE ART MEETS SCIENCE

Now Showing | Level B2

Enter a futuristic world of high-tech interactive experiences created in collaboration with teamLab, a renowned Japanese interdisciplinary art collective. Be immersed in a world of art, science, magic and metaphor through a collection of cutting-edge digital installations.



Official Projection Partner

Panasonic
BUSINESS

Preferred Payment



Sliding through the Fruit Field, teamLab

SPOTLIGHT GALLERY TALKS

Saturday - 6, 13 & 27 May, 3, 10, 17 & 24 Jun |
11:30am - 12:30pm & 5pm - 6pm

Boundaries between art and technology are becoming increasingly blurred as new grounds are broken in digital artistic expression. Discover the ideas and themes in our permanent exhibition through this series of lively talks, happening at various exhibition zones.

Complimentary to ticket-holders of
Future World: Where Art Meets Science.

LIGHT & COLOUR WORKSHOP

Family Fridays - 12 & 26 May |
4:30pm - 5:30pm

Experience light and colour through various hands-on experiments such as using a spectrophotometer to discover different spectrums. Walk into a dark room and witness the impact of colour through observations.

\$5 per participant. Up to 20 participants on a first-come, first-served basis.



DID YOU KNOW?

Sliding through the Fruit Field is one of the latest interactive and playful artwork to be added to *Future World*. Have a go on the slide, and watch as you radiate sunlight on your way down, giving life to the fruits and flowers which blossom around you.

The Universe and Art

An artistic voyage through space

Now Showing | Level 3

The Universe and Art is an artistic voyage through space, exploring where we came from and where we are going. It weaves a rich constellation of Eastern and Western philosophies, ancient and contemporary art, science and religion, to explore how humanity has constantly contemplated its presence in the universe.

The Universe and Art: An Artistic Voyage through Space is jointly curated and organised by Mori Art Museum and ArtScience Museum, in association with the Asian Civilisations Museum.

Co-organised with:



In association with:



PUBLIC GUIDED TOUR

Family Fridays - 5, 12 & 19 May, 9, 16 & 23 Jun | 3pm - 4pm

Sunday - 7 & 14 May | 11:30am - 12:30pm & 5pm - 6pm

Sunday - 28 May, 4, 11, 18 & 25 Jun | 5pm - 6pm

MANDARIN:

Saturday - 6, 13, 20, 27 May, 3, 10, 17, 24 Jun | 4pm - 5pm

Who are we? What is our place in the universe? How do cultures, art and technology play a part in understanding the cosmos? Join us on an enlightening tour as we journey through time and space to ponder some of the universe's deepest mysteries.

Complimentary to ticket-holders of *The Universe and Art: An Artistic Voyage through Space*. Terms and Conditions apply.

MAKE YOUR OWN CYANOTYPE UNIVERSE

Family Fridays - 5 & 19 May, 2 & 30 Jun | 4:30pm - 5:30pm

Join us in Cyanotype Universe where we use one of the oldest printing techniques to create beautiful photographic blueprints of space.

\$8 per participant. Up to 20 participants on a first-come, first-served basis.

For more information on the programmes, please visit MarinaBaySands.com/ArtScienceMuseum



DID YOU KNOW?

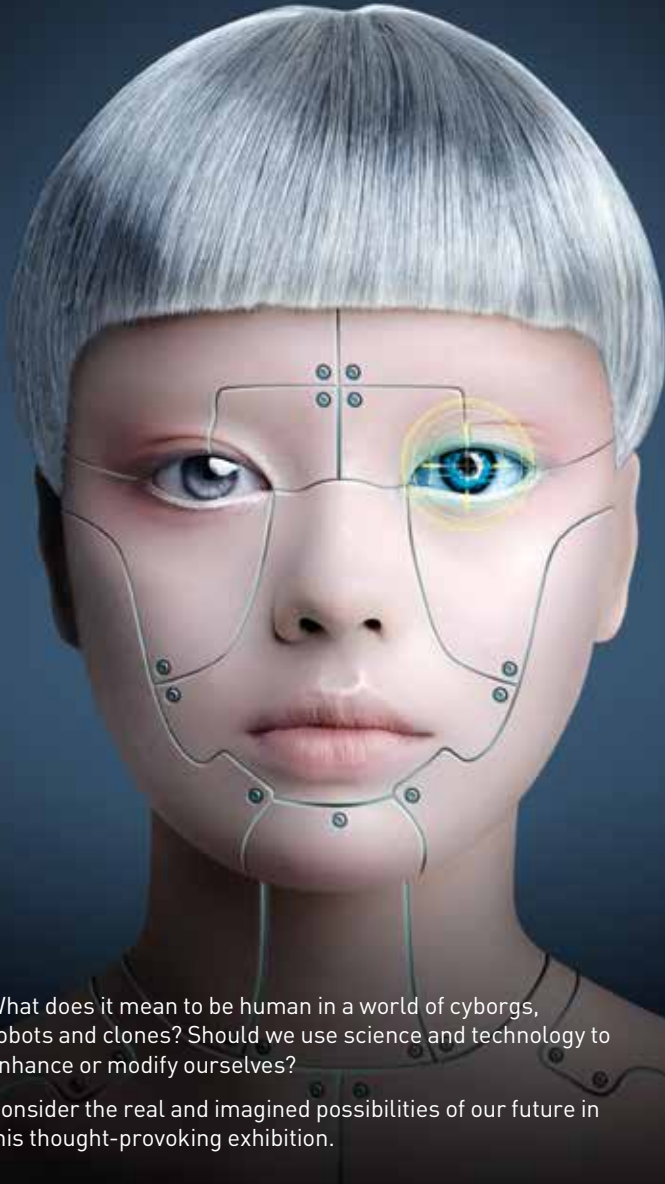
The Tale of the Bamboo Cutter handsroll, as seen on the left, is deemed as Japan's oldest sci-fi novel. It tells the impossible love story between Princess Kaguya, a beautiful visitor from the Moon and the Emperor of Japan.

Taketori Monogatari
[The Tale of the Bamboo Cutter]
Volume 3 of 3 (Hude Version)
17th century
Handsroll
Collection of Kokugakuin University
Library, Japan

HUMAN+

THE FUTURE OF OUR SPECIES

From 20 May | Level B2



© Anouk Witsche, 2015

What does it mean to be human in a world of cyborgs, robots and clones? Should we use science and technology to enhance or modify ourselves?

Consider the real and imagined possibilities of our future in this thought-provoking exhibition.

INSIGHTS GUIDED TOUR

Saturday - 20 May | 11:30am - 12:30pm & 5pm - 6pm

PUBLIC GUIDED TOUR

Family Fridays - 26 May, 2 & 30 Jun | 3pm - 4pm

Sunday - 21 May | 11:30am - 12:30pm & 5pm - 6pm

Sunday - 28 May, 4, 11, 18 & 25 Jun |
11:30am - 12:30pm

How will we enhance ourselves to become better as a species? Through the themes of augmented capacities, new survival strategies and non-human encounters presented in the exhibition, explore what the future holds for us.

Complimentary to ticket-holders of *Human+ The Future of Our Species*.

CONVERSATIONS: FUTURE SAPIENS

Saturday - 20 May

What makes us human in an age of science and how do new technologies challenge our understanding of what it is to be human? Unfolding across a series of talks linking ideas, artworks and experiments in *Human+ The Future of Our Species*, *Conversations* invites you to contemplate the different dimensions, societal costs and unintended consequences of human enhancement.

Admission is free. Register in the lobby.

For more information on the programmes, please visit MarinaBaySands.com/ArtScienceMuseum

DID YOU KNOW?

Nadine, the social robot created by scientists at the Institute for Media Innovation at Nanyang Technological University in Singapore, will make her first public appearance in this exhibition.

Co-produced by Science Gallery at Trinity College Dublin and Centre de Cultura Contemporània de Barcelona.

INTO THE WILD

An Immersive Virtual Adventure

Now On | Free

Make a real-world impact on nature as you go on a virtual adventure using Tango, a cutting-edge interactive technology by Google.

Step into the shoes of a ranger, spot wildlife in their natural habitat, defend the environment, and more. Do your part for nature and pledge your support to restore the rainforests of Southeast Asia.

Into the Wild culminates with a cinematic experience, directed by one of Singapore's leading filmmakers, Brian Gothong Tan. Using state-of-the-art animation and projection-mapping techniques, Tan has created a portal through which you pass from the virtual reality of the digital adventure, into an immersive, cinematic experience on a spectacular scale.

#IntoTheWildSG

Prebook your device on MarinaBaySands.com/ArtScienceMuseum prior to your visit today!

DID YOU KNOW?

The primary threat to pangolins in Asia, and increasingly in Africa, is illegal hunting and poaching for illicit international trade, which is largely driven by market demand in East Asia.

Lenovo

Panasonic
BUSINESS

Qualcomm
snapdragon

Tango



ARTSCIENCE ON SCREEN

ArtScience on Screen explores the intersection between art and science using moving image, video and film.

This rolling programme includes solo showcases, curated programmes, feature-length films, multi-screen presentations and creative documentaries, featuring exciting filmmakers and artists from Singapore and beyond.

LOOK AT THE EARTH FROM THE UNIVERSE

This is a companion programme of single screen artists' films to complement *The Universe and Art: An Artistic Voyage through Space*. With elements of science fiction and strong strands of performance, *Look at the Earth from the Universe* explores our fascination with space and questions what might happen in an encounter with other intelligent life.

This screening programme of single-channel video works was curated by Reiko Tsubaki (Associate Curator at Mori Art Museum, Tokyo). It is a part of ArtScience Museum's Art and Science of Space season.



©Shezad Dawood: *Towards the Possible* Film, 2014

For more dates and timings, please visit MarinaBaySands.com/ArtScienceMuseum

ARTSCIENCE LATE

Every third Thursday of the month | 7pm – 10pm

For one Thursday evening every month, ArtScience Museum keeps its doors open straight through until 10pm offering free art performances, late exhibition viewings and special 1-for-1 ticket offer to all exhibitions (7pm - 10pm)*.

See a different side of the museum where exploration and experimentation are de rigueur of the night; where artistic collaboration and discovery take over the museum's spaces; where disciplinary boundaries are challenged as performance and new media art collide and meld together.

Join us at the next ArtScience Late on 18 May and 15 June!



For more details, please visit MarinaBaySands.com/ArtScienceMuseum

SUNDAY SHOWCASE

Tinker with cutting-edge projects undertaken by various tertiary institutions across Singapore at *Sunday Showcase*, and interact with their creators as they share creative insights into art, science, design and technology.

THROUGH OUR EYES

Sunday - Tuesday, 21 - 23 May | 10am - 7pm

Interpret reality as you please in *Through Our Eyes*, an interactive experience presented by Nanyang Polytechnic, School of Interactive and Digital Media. The showcase brings to life the playful spirit of perceptions through immersive projects that represent the best of new media, art, and technology.



CREATIVITY AND COGNITION 2017

Tuesday - Friday, 27 - 30 Jun | 10am - 7pm

Be inspired by how creativity, as a wonderful aspect of human experience, is transformative and potentially transcendental. Examine how creativity is the partner of inspiration and of the moments when we go beyond ourselves to reach new heights.

Admission to Sunday Showcase is free. Register in the lobby.

For more details, please visit MarinaBaySands.com/ArtScienceMuseum

SPECIAL EVENT

MARTIN REES: EXPLORING THE COSMOS

Friday - 16 Jun | 5pm

Astronomer Royal Martin Rees invites you to explore the cosmos, imagining its origins, and what the future might hold. In his signature style mixing humour and profundity, he encourages us to use astrophysics and science more broadly, not only to make sense of space and time, but also to question the bigger existential reasons for our being.



FABCAFE

ROBOTIC ARTS

Family Fridays - 9, 16 & 23 Jun | 4:30pm - 5:30pm

Bringing together art, creativity and technology, FabCafe organises programmes and workshops for students, young entrepreneurs, designers and children of all ages.

Create a robotic arm using easy robotic components and hydraulics. Use your new arm to create a futuristic cyborg artwork.

\$15 per participant. Terms and Conditions apply.

Pre-register: hello@fabcafe.sg



For upcoming workshop details, please visit MarinaBaySands.com/ArtScienceMuseum

Discover Endless Rewards

Access more privileges at the museum, attractions,
theatres and more when you visit!



COMPLIMENTARY

ArtScience Museum ticket upon purchase of 1 standard ticket

9% **INSTANT REWARDS**
DOLLARS at selected
outlets & guaranteed 3%
at over 200 outlets

15% **OFF** tickets for
selected shows
at MasterCard®
Theatres

Join for **FREE** at any membership counter in Marina Bay Sands.

Hotel Lobby Tower 1 or 3 | Level B1 (Above Sampan Rides)
Level B2 (Near Skating Rink)

MarinaBaySands.com/SandsRewardsLifeStyle

Terms and Conditions apply.