

MUSEUM GUIDE

MAY 2016

WHAT'S ON

- **Big Bang Data**
- Van Cleef & Arpels
The Art and Science of Gems
- Future World
Where Art Meets Science

Ryoji Ikeda, data.tron 2007, photo: Ryoichi Maruo



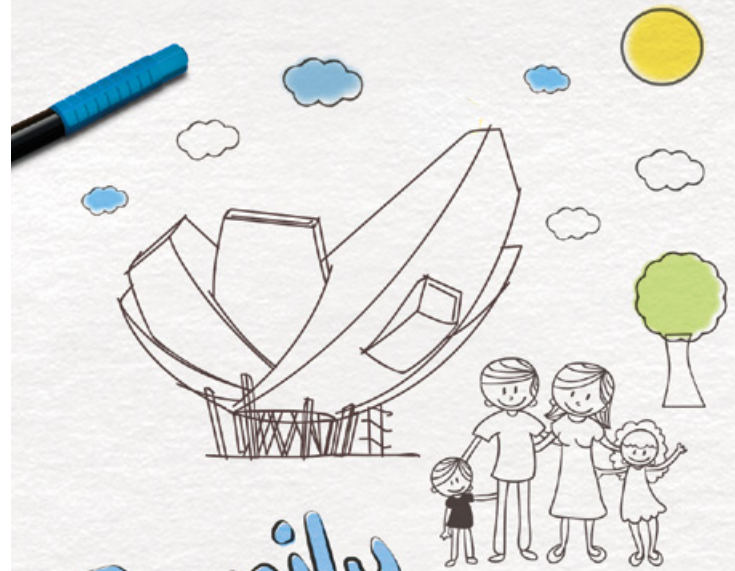
ArtScience
Museum
MARINA BAY SANDS

WELCOME TO ARTSCIENCE MUSEUM



ArtScience Museum™ at Marina Bay Sands® is the museum that celebrates the intersection between art, science, technology and culture. Since its opening in February 2011, it has staged major exhibitions by some of the world's leading artists, including Leonardo da Vinci, Salvador Dalí, Andy Warhol and Vincent Van Gogh, as well as major exhibitions which explore aspects of scientific history.

ArtScience Museum is Southeast Asia's leading cultural institution exploring the interrelationship between art and science. Through its programmes of exhibitions, events, performances and education activities, it shows how the world around us is transformed by art, science, technology and culture. The museum's combination of striking architecture, award-winning design, strong curation and intellectual discussions makes it unique internationally. Featuring 21 gallery spaces totalling 50,000 square feet (4,650 m²), the iconic lotus-inspired building has played host to major international touring exhibitions from renowned collections in the world.



Family Fridays at ArtScience Museum™

The museum makes Fridays fun and inspiring for families. Have a great bonding time and embark on an exploratory learning process!

Look forward to:

- ✓ **Free entry for 4 children with every adult ticket purchase**
- ✓ Complimentary take-home printed resource
- ✓ Engaging with inspiring world-class exhibitions
- ✓ Interactive family-friendly guided tours and workshops
- ✓ 10% discount at the Museum Shop

For more information on Family Fridays, please visit MarinaBaySands.com/FamilyFridays

Offer is not applicable during Singapore school holidays (28 May–26 June) and public holidays.

Other Terms and Conditions apply.

FUTURE WORLD

WHERE ART MEETS SCIENCE

Now Showing

Enter a futuristic world of high-tech artworks and interactive digital experiences created in collaboration with teamLab, a globally-renowned Japanese group of ultra-technologists and multi-award winning art collective.

Let the interactive artworks inspire your imagination, and open a world of playful possibilities through the adventure of exploration. Be immersed in a world of art, science, magic and metaphor through 15 cutting-edge digital installations.

SPOTLIGHT GALLERY TALKS

Saturday – 7, 14 & 28 May | 2:30pm–3:30pm

Boundaries between art and technology are becoming increasingly blurred as new grounds are broken in digital artistic expression. Discover the ideas and themes in our permanent exhibition through this series of lively spotlight talks. Join us for interactive play happening at various exhibition zones.

Complimentary to ticket-holders of *Future World*.



Official Projection Partner

Panasonic
BUSINESS



FUTURE WORLD

WHERE ART MEETS SCIENCE

Now Showing



CREATIVE AQUARIUM

Saturday - 7, 14 & 28 May | 3:30pm-4:30pm



Celebrate the diversity of life and create your own digital sea creature. Join us as we discover what makes a healthy ecosystem and have fun putting together your own environments.

Complimentary to ticket-holders of *Future World*.
Recommended for children aged 5 and above.
Up to 20 participants on a first-come, first-served basis.
Register 15 minutes before workshop begins.



THE ART & SCIENCE OF GEMS

23 April to 14 August 2016

Van Cleef & Arpels

with the participation of the
French National Museum of Natural History



Download the audio guide Application
www.artscienceofgems.vancleefarpels.com

© Van Cleef & Arpels 2016

Explore the worlds of exquisite jewellery and their links to minerals at the *Van Cleef & Arpels: The Art and Science of Gems* exhibition. Co-curated with ArtScience Museum, over 450 stunning creations from Van Cleef & Arpels and 250 gems and minerals from the French National Museum of Natural History collection will be on display, showcasing the intersection between the science of mineralogy and the art of jewellery making.

PUBLIC GUIDED TOUR

ENGLISH:

Public Holiday, Labour Day – 2 May | 11:30am–12:30pm

Family Fridays – 6, 13, 20 & 27 May | 3pm–4pm

Sunday – 8 & 15 May | 5pm–6pm

MANDARIN:

Sunday – 1, 8, 15, 22 & 29 May | 4pm–5pm

Saturday – 7, 14, 21 & 28 May | 11:30am–12:30pm

Embark on a journey into the worlds of exquisite jewellery and their links to minerals. Discover the stories behind some of Van Cleef & Arpels' most iconic creations together with geology and mineralogy exhibits from the French National Museum of Natural History.

Complimentary to ticket-holders of *Van Cleef & Arpels: The Art and Science of Gems*. Up to 25 participants on a first-come, first-served basis. Registration stickers will be given out five minutes before tour begins at exhibition entrance.

A DAY IN THE LIFE OF A MINERALOGIST

Sunday – 1, 8 & 15 May | 2:30pm–3:30pm

Family Fridays – 6, 13, 20 & 27 May | 4:30pm–5:30pm

Discover the world of gemstones in this hands-on demonstration revealing the working methods and collection of a mineralogist. Try your hands at using tools to examine minerals and their physical properties.

Complimentary to ticket-holders of *Van Cleef & Arpels: The Art and Science of Gems*. Recommended for children aged 6 and above. Up to 20 participants on a first-come, first-served basis. Register 15 minutes before workshop begins.

ARTSCIENCE MUSEUM™ PRESENTS

BIG BANG DATA

WHAT DOES DATA MEAN TO YOU?

Opens 21 May



Explore the meaning and implications of our digital footprint. Find out how data is radically transforming our lives, decisions and future through a combination of interactive installations, historical artefacts and contemporary artworks.

CCCB Centre de Cultura Contemporània de Barcelona

Telefónica
FUNDACIÓN

Official Projection Partner

Panasonic
BUSINESS

smart city expo
WORLD CONGRESS

Sabadell
Fundación

CURATOR'S GUIDED TOUR

Saturday – 21 May | 11:30am–12:30pm

In this special tour with *Big Bang Data* co-curator, José Luis de Vicente, discover the ways in which data is transforming our world. This exclusive insight into the curatorial process will provide an in-depth understanding of the exhibition narrative, the selection of artworks and interesting facts about each work.

Complimentary to ticket-holders of *Big Bang Data* exhibition. Up to 25 participants on a first-come, first-served basis. Registration stickers will be given out five minutes before tour begins at exhibition entrance.

PUBLIC GUIDED TOUR

Sunday – 22 & 29 May | 5pm–6pm

Discover the significant and surprising ways data is dramatically changing the way we interact with each other and with the world. Join the guided tour for an insight into the opportunities and limitations of data as we explore what data means to us and our future.

Complimentary to ticket-holders of *Big Bang Data*. Up to 25 participants on a first-come, first-served basis. Registration stickers will be given out five minutes before tour begins at exhibition entrance.

MAKING DATA FOOTPRINTS

Sunday – 29 May | 2.30pm–3.30pm

Understand the fundamentals of data in this hands-on workshop: what it is, how it is collected, and how it can be visualised. Experiment, get creative with various materials and share your data visualisation project with friends and family.

Complimentary to ticket-holders of *Big Bang Data*. Up to 20 participants on a first-come, first-served basis. Register 15 minutes before workshop begins.

CONVERSATIONS

THE DATA ROUTE

Saturday – 21 May | 2pm



Are you ready for the era of Big Data? Join us as we discuss and investigate the route that Big Data has taken, and how this affects the way information is communicated, shared and used in our digital age.

Free. Register in the lobby.

ARTSCIENCE LATE

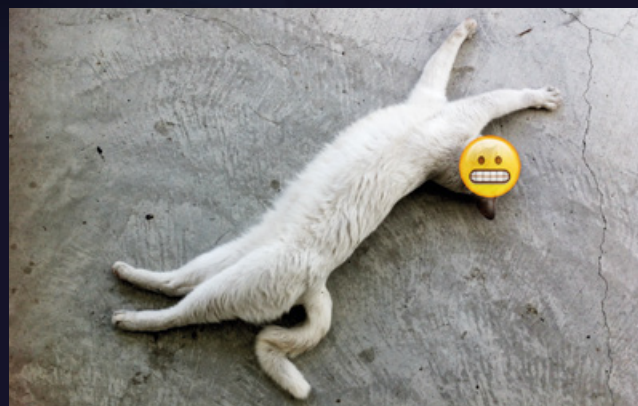
GET INSPIRED

7PM – 10PM

WE'RE EVERYWHERE,
SOMEWHERE AND NOWHERE

A PROJECT BY BANI HAYKAL

Thursday – 26 May, 8pm



Curious about life in the 21st century? Try to be. Hello world. We are a couple from Singapore and we'd like to share with you what life is like in unnatural environments and circumstances; where the wilderness is a lolcat riddled with emojis and your life quantified by your browsing history. Is this a performance? Maybe. But at this stage of our existence, we are always performing for someone.

Free. Register in the lobby.
In conjunction with the opening of *Big Bang Data*.

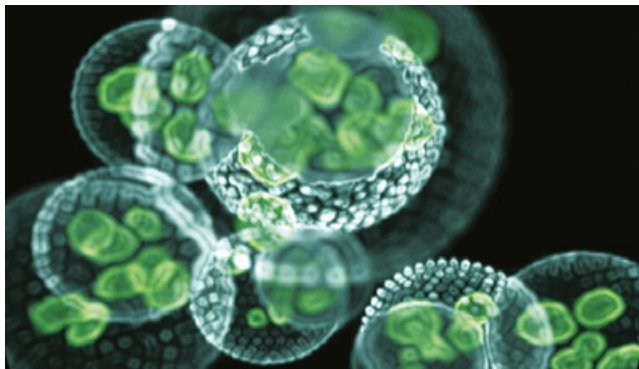
#ArtScienceLate

ARTSCIENCE ON SCREEN

OBSERVATIONS

Various dates

Shown in a continuous loop



Observations is a curated programme of artists' moving-image works that explores how a scientific line of enquiry, or a methodology of observation derived from science, generates meaning within artistic practices. Through the work of four international artists, the programme celebrates curiosity and seeing; how the artist's eye might see the world differently. Referencing nanotechnologies, the natural world, sound waves and the materiality of our own bodies, each of these works take a different starting point, and use diverse ways to explore their subjects. As a whole, these works remind us of the powerful potential of the artistic processes of exploring, perceiving and visualising the world around us. Their investigations take us on a journey of sight and sound that penetrates the surface of everyday observations and opens the door to otherwise unseen worlds.

Featuring works by Semiconductor (UK), Ryoichi Kurokawa (Japan), Skoltz_Kolgen (Canada) and Rohini Devasher (India).

Free. Register in the Lobby.

ARTSCIENCE MUSEUM AT MARINA BAY SANDS

The museum is located along the Marina Bay waterfront in the heart of Singapore, only 20 minutes from Changi Airport.



MRT Bayfront Station (Circle Line/Downtown Line) – 10-minute walk
Promenade Station (Circle Line) – 15-minute walk

Bus Bus stop at Bayfront Avenue
SBS: 97, 97E, 133, 133M, 502, 518, SMRT: 106

Taxi Pick-up and drop-off near
The Shoppes at Marina Bay Sands®

Car Car park entrance is located at Sands Expo® and
Convention Link, via Bayfront Link

Complimentary weekday self-parking (10am – 4pm) with \$50 spent at ArtScience Museum. Redemption by 5pm at ArtScience Museum Box Office or Level B2 Concierge at The Shoppes.

For tickets, visit MarinaBaySands.com/ArtScienceMuseum, any Marina Bay Sands Box Office, or call +65 6688 8826. Tickets are also available at all SISTIC channels.

Opening hours: Daily 10am – 7pm (last admission: 6pm)
MarinaBaySands.com/ArtScienceMuseum

 [Facebook.com/ArtScienceMuseum](https://www.facebook.com/ArtScienceMuseum)

 [Twitter.com/ArtSciMuseum](https://twitter.com/ArtSciMuseum)

 [Instagram.com/MarinaBaySands](https://www.instagram.com/MarinaBaySands)



EXPLORE MARINA BAY SANDS ON YOUR MOBILE

Download our Pocket Concierge app by scanning this QR code:

Alternatively, search for "Marina Bay Sands" in the iTunes App Store / Google Play.

All information is correct at the time of print and is subject to change.

MORE REWARDS & DISCOUNTS

Access more privileges at the museum, attractions, theatres and more when you visit!



Complimentary
1 ArtScience Museum
ticket upon purchase
of 1 standard ticket



Up to
20% savings
on attractions



15% off tickets
for selected shows at
MasterCard® Theatres

Pick up your **complimentary** Sands Rewards LifeStyle card
at any membership counter in Marina Bay Sands:

Hotel Lobby Tower 1 or 3 | Level B1 (Above Sampan Rides)
Level B2 (Near Skating Rink)

MarinaBaySands.com/SandsRewardsLifeStyle

Sands
REWARDS
LIFESTYLE



LIVE IN STYLE
LIVE REWARDED

Terms and Conditions apply.