

INTRODUCING: ARTSCIENCE MUSEUM



CONFIDENTIALITY

The information provided in this document is confidential and may only be used for the sole purpose of the proposed exhibition.

Marina Bay Sands Pte Ltd may, at its discretion and without notice, change or replace any of the exhibitions listed in this deck.

This document and its contents may not be used, published or redistributed without the prior written consent of Marina Bay Sands Pte Ltd.



ArtScience Museum is an iconic cultural landmark in Singapore. Our mission is to explore where art, science, culture and technology come together.



It is here at this intersection of the disciplines that we believe the future is created.

ARTSCIENCE MUSEUM: STRENGTHS

Quality Content and Programming:

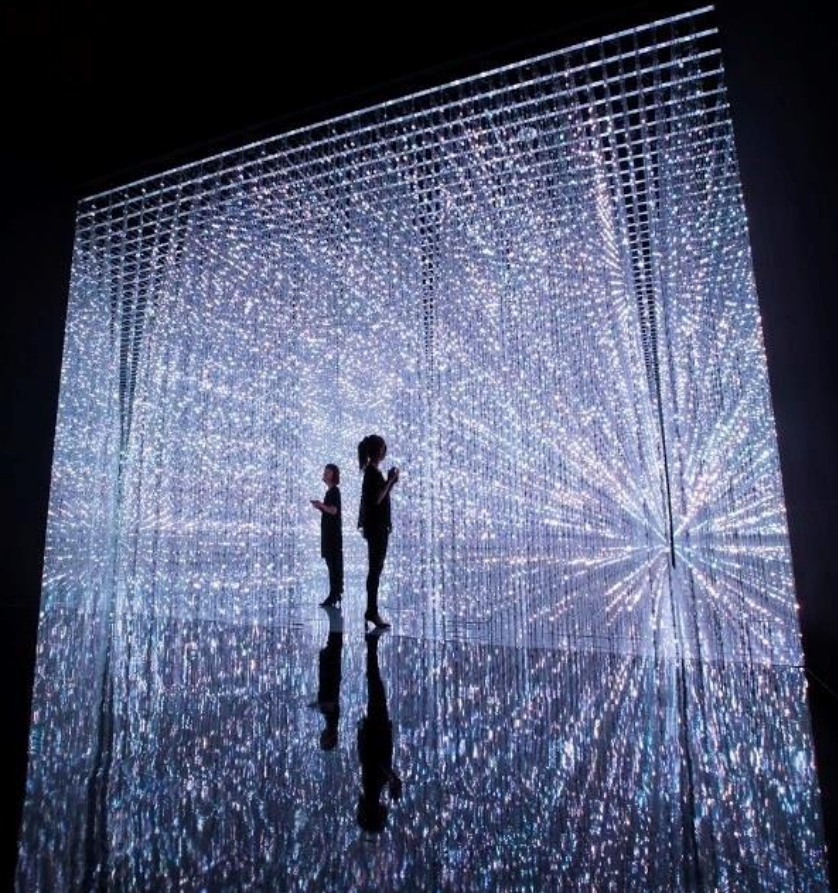
Constantly voted as one of the Top Museums in South East Asia

Wide range of exciting topics:

The best of the arts and sciences, with around 7 major exhibitions and over 100 events and programmes each a year

Cutting edge innovations:

Our permanent exhibition, *Future World*, touring exhibitions, locally curated exhibitions and showcases with leading research institutes and universities



ARTSCIENCE MUSEUM: ASIA PACIFIC'S FIRST LEED® GOLD CERTIFIED MUSEUM

Over the past five years, the museum has collaborated with like-minded partners to stage several exhibitions, programmes and educational activities that send a clear message about the urgency of taking action to address environmental threats such as climate change and biodiversity loss.

- Innovative events raising public awareness and advocating action to over 200,000 people: *Singapore Eco Film Festival* (2016-2018); *Into the Wild* (2017); *Season of Sustainability* (2019); *Skyscraper, The Bruges Whale* (2019)
- National Geographic collaboration with provocative *Planet or Plastic?* Exhibition (2020)
- Eco-Business partnership delivering *Changing Course*; a flagship climate change initiative (2019)



ARTSCIENCE MUSEUM: SUSTAINABILITY

Energy saving initiatives such as the use of LED lights and a programmable lighting system enable the museum to be **47 per cent more energy efficient** than similar rated buildings

Water efficiency achieved through the museum's Rain Oculus feature—nearly **1,400,000 litres of rainwater is recycled each year**. The water is reused for landscaping, water feature maintenance and toilet flushing

More than 50 per cent of the museum's office and cleaning supplies are certified sustainable

Over 50 per cent of all operational waste – such as paper, cardboard and plastics – being recycled



FUTURE WORLD: WHERE ART MEETS SCIENCE



Permanent: Basement 2 | Galleries 1 to 5

Future World, is our landmark permanent exhibition. It is a fully immersive 1500 square metre digital universe, where 19 spectacular art installations are brought to life and evolve in real-time through visitor presence and participation.

FUTURE WORLD: WHERE ART MEETS SCIENCE



It is created with teamLab, an award-winning Japanese collective of "ultra technologists" that includes artists, programmers, engineers, CG animators, mathematicians, architects and designers.

PRIVATE EVENTS & VENUE HIRE

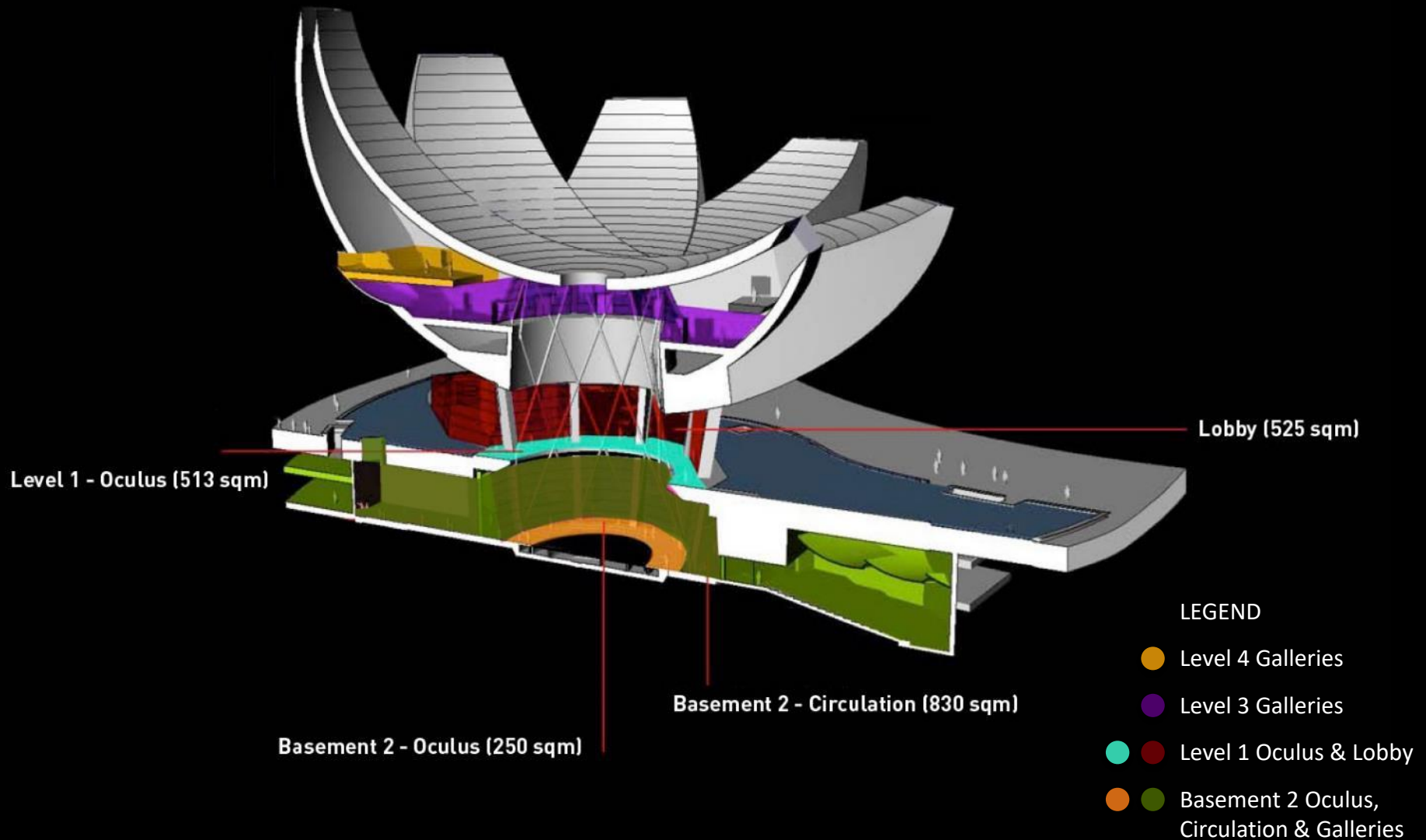
ArtScience Museum also hosts private events including conferences, product launches, cocktail receptions, book launches, parties, private exhibitions, and many other events.



THE SPACES

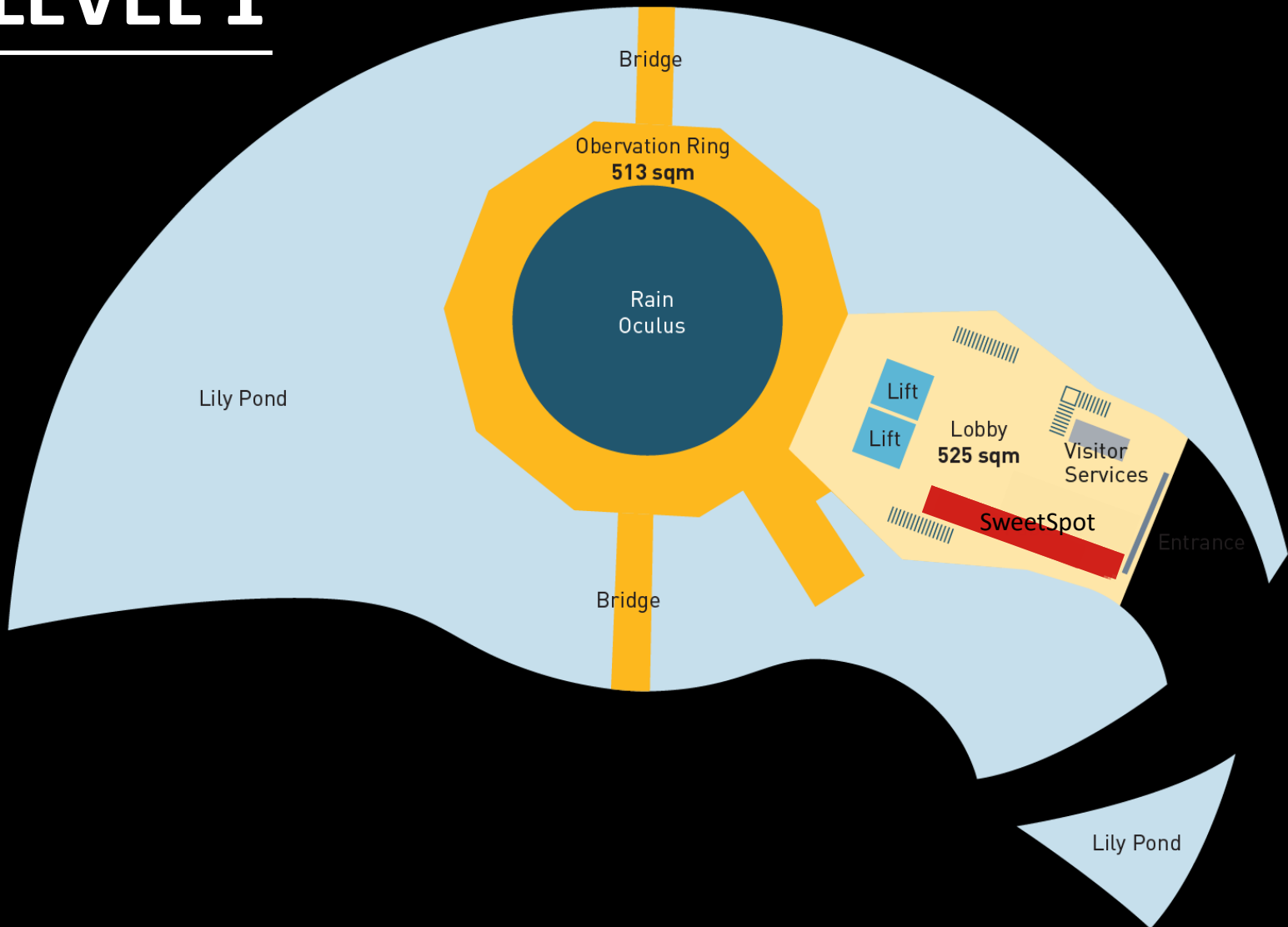


THE SPACES



ARTSCIENCE MUSEUM

– LEVEL 1





Level 1 (Lobby)



Level 1 (Lobby)



HOMEMADE
CAKES & TARTS

Huawei Exclusive Customer
Appreciation Night 2022

13 May 2022, 19:00pm - 23:00pm
Jubilee Museum Level 1, 6 Bayfront Ave, Singapore 018914

HUAWEI

FRESHLY BAKED PASTRIES

MUFFIN OF THE DAY \$2.00
CROISSANT \$2.00
HAM & CHEESE CROISSANT \$3.00
BUN OF THE DAY \$3.00
BUNIC \$2

FRESH YOGHURT \$4

SMOOTHIES \$5

FRESH JUICE BLENDS \$5

TEA & SPECIALS

COFFEE

Huawei Exclusive Customer
Appreciation Night 2022

Level 1 (Lobby)



LEVEL 4
LEVEL 3
LEVEL 1
BASEMENT 2

- Patricia Piccinini: The Art of Connecting
- Video: Black Mirror
- SweetSpot Cafe
- Ticketing
- Museum Shop
- Future World: Where Art Meets Science
- MENTAL: Colours of Wellbeing

SCIT - EMI



Level 1 (Lobby)



Level 1 (Oculus Exterior)



ArtScience
Museum
MARINA BAY SANDS

→

TICKETING AT BASEMENT 2

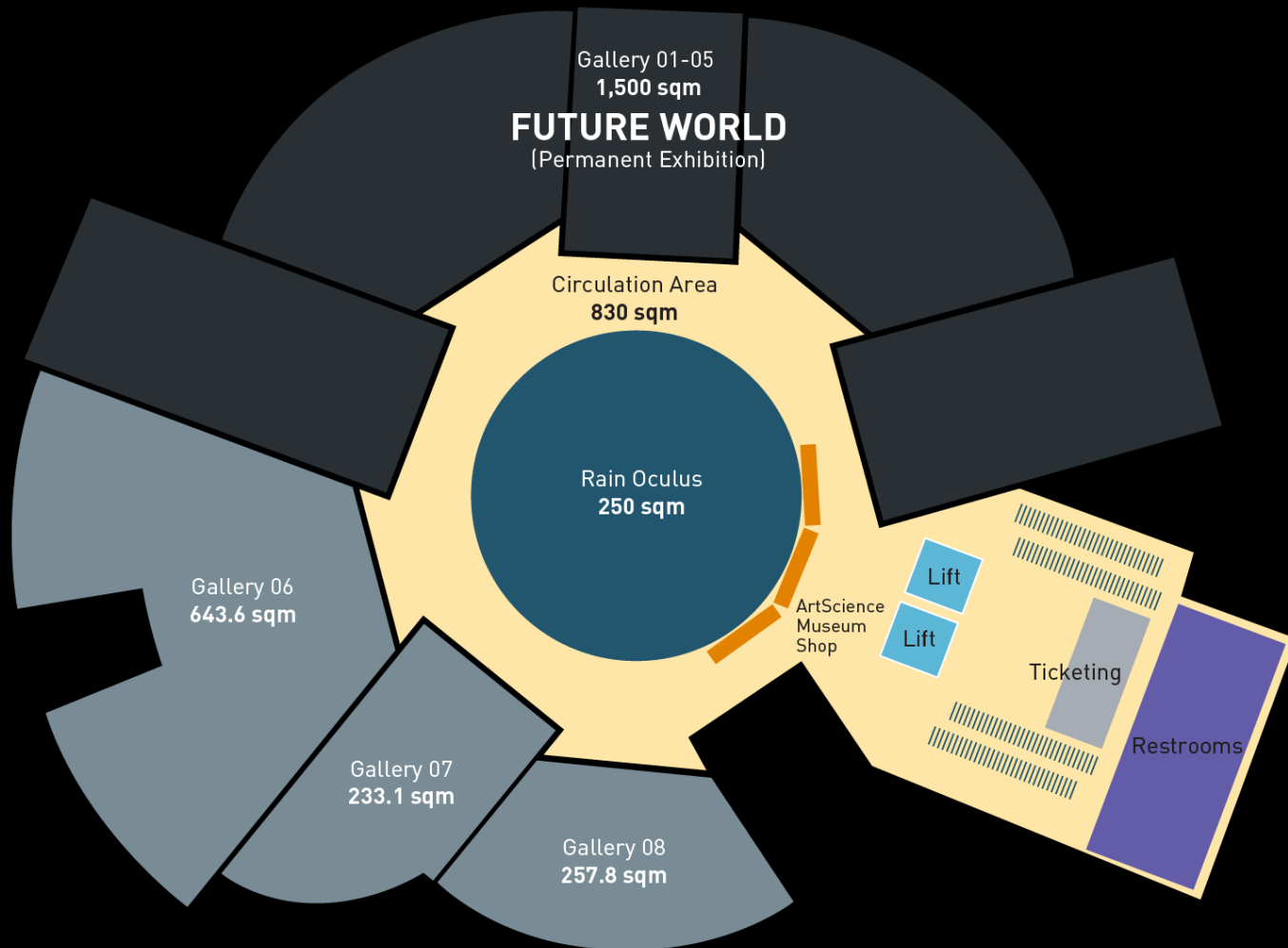
Level 1 (Oculus Exterior)



Level 1 (Oculus Exterior)

ARTSCIENCE MUSEUM

– BASEMENT 2





"Science provides an understanding of the world
and art provides a universal understanding of it."
Mae C. Jemison, Astronaut

Second Annual Eagle Society
SOIRÉE 2017

MARINA BAY Sands
SINGAPORE

Science for me is very close to art.
Scientific discovery is an irrational act.
It's an intuition which turns out to be reality and
I see no difference between a scientist doing
his work in a laboratory and an artist making a painting.

Basement 2 (Circulation)



Basement 2 (Circulation)



Basement 2 (Oculus)



Basement 2 (Oculus)



Basement 2 (Oculus)



Basement 2 (Oculus)



Basement 2 (Oculus)

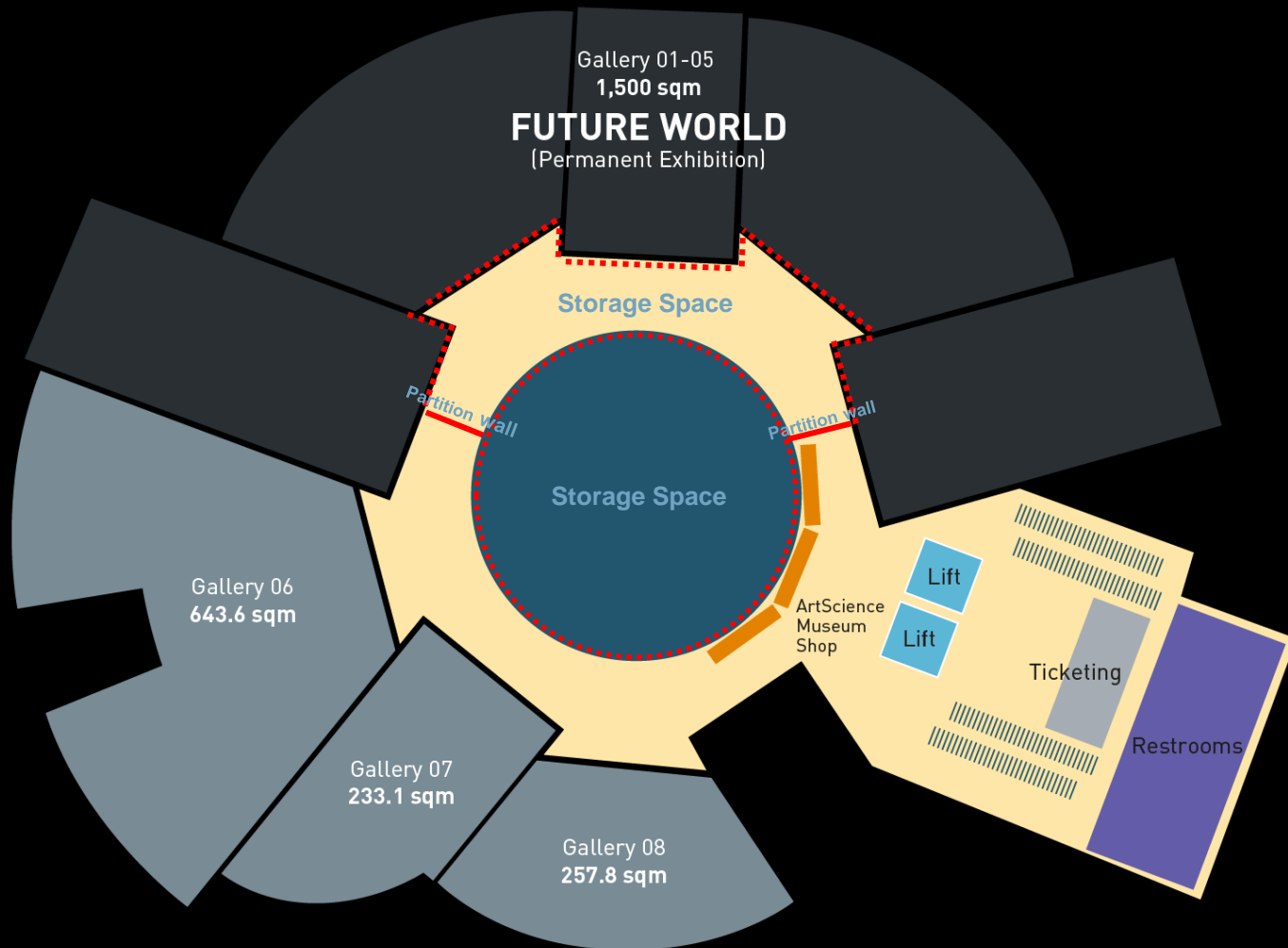


Basement 2 (Future World)

ARTSCIENCE MUSEUM

Partial Circulation + Oculus (Setup storage space before 7pm)

**Refer to area in red*

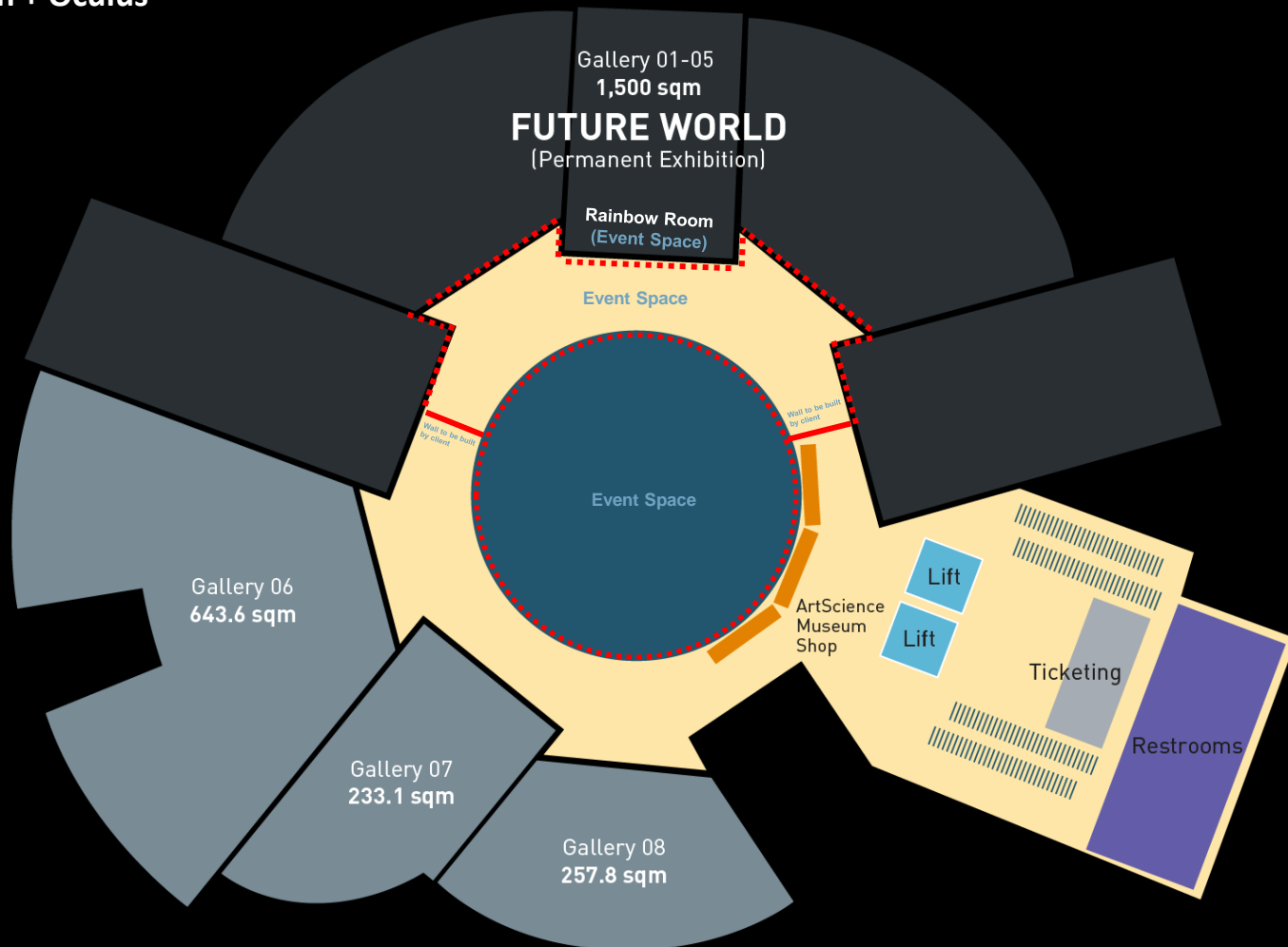


ARTSCIENCE MUSEUM

– BASEMENT 2 Lite

Partial Circulation + Oculus

**Refer to area in red*





THE BALVENIE[®]
#THEMAKERSPROJECT

Basement 2 Lite (Rainbow Room)



THE BALVENIE®
#THEMAKERSPROJECT

Basement 2 Lite (Rainbow Room)



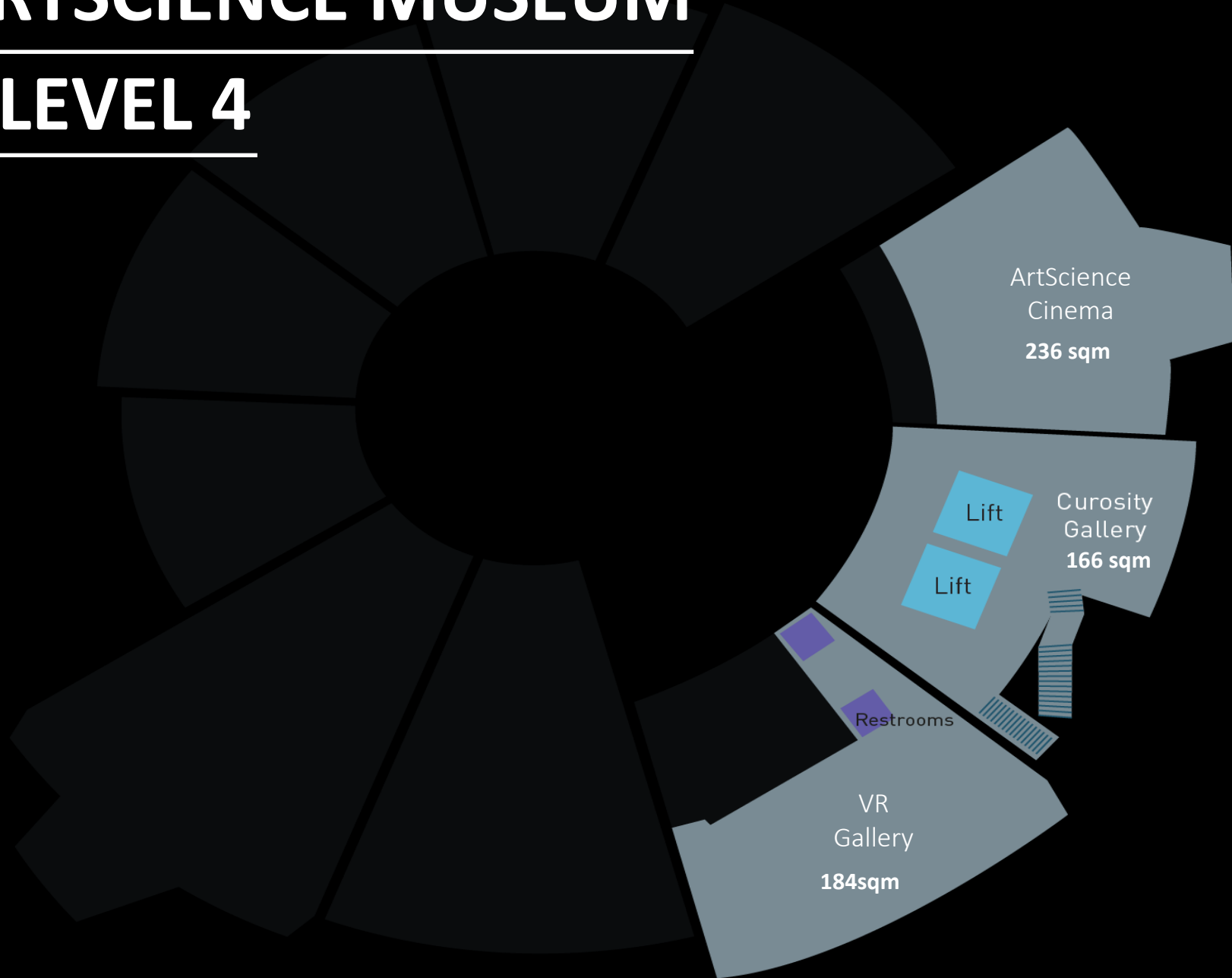
Basement 2 Lite (Circulation)



Basement 2 Lite (Circulation)

ARTSCIENCE MUSEUM

– LEVEL 4





Level 4 (ArtScience Cinema with Seats)

FENDI
ROMA





Level 4 (ArtScience Cinema)



Level 4 (ArtScience Cinema)



SONY

360 Spatial Sound | Acoustic Center Sync

360 Spatial Sound Essentials, We got you in the zone
360 Spatial Sound Mapping

Tailor your Dolby Atmos® experience in combination with SRS-NS7 and BRAVIA XR

A new frontier of surround sound

A80K 55 65 77

SONY

With BRAVIA, su...

ZEVO
Blazing 1-GB-...
W830K 32

W830K 32

Level 4 (ArtScience Cinema)

Google TV

SONY

BRAVIA XR

4K
HDR



X95K
65 85



A80K
55 65 77



X85K
50 55 65 75 85



55 65 75 85





MILLENNIAL #M2020

"We need to be carbon 'net zero' by 2050. That's the goal. It's not just a goal, it's a mission." @IBM

"IBM is committed to net-zero emissions by 2040. We're taking action now." @IBM

"IBM is committed to net-zero emissions by 2040. We're taking action now." @IBM

"IBM is committed to net-zero emissions by 2040. We're taking action now." @IBM

"IBM is committed to net-zero emissions by 2040. We're taking action now." @IBM

"IBM is committed to net-zero emissions by 2040. We're taking action now." @IBM

"IBM is committed to net-zero emissions by 2040. We're taking action now." @IBM

"IBM is committed to net-zero emissions by 2040. We're taking action now." @IBM

"IBM is committed to net-zero emissions by 2040. We're taking action now." @IBM

"IBM is committed to net-zero emissions by 2040. We're taking action now." @IBM

Oracle | IBM | Accenture | Microsoft | SAP | Salesforce | Amazon | LinkedIn | Facebook | Twitter | YouTube | Instagram | TikTok | Twitch | Discord | Twitch | Discord | Twitch | Discord

MILLENNIAL 2020

Level 4 (ArtScience Cinema)

WORLD OF FENDI



SEU
FENDI
FENDI
FENDI
FENDI

Level 4 (Curiosity Gallery)



Level 4 (Curiosity Gallery)



Level 4 (Curiosity Gallery)



Level 4 (VR Gallery Setup)



Level 4 (VR Gallery)



salesforce

CONNECT TO YOUR CUSTOMERS
IN A WHOLE NEW WAY

Level 4 (VR Gallery)



Level 4 (VR Gallery)

ARTSCIENCE MUSEUM VENUE RATES

All venue rentals in the museum includes entry into the exhibitions during museum operating hours, up to the capacity of the venue booked

*Prices reflected will be effective from 1st October 2022 onwards, subject to changes without prior notice

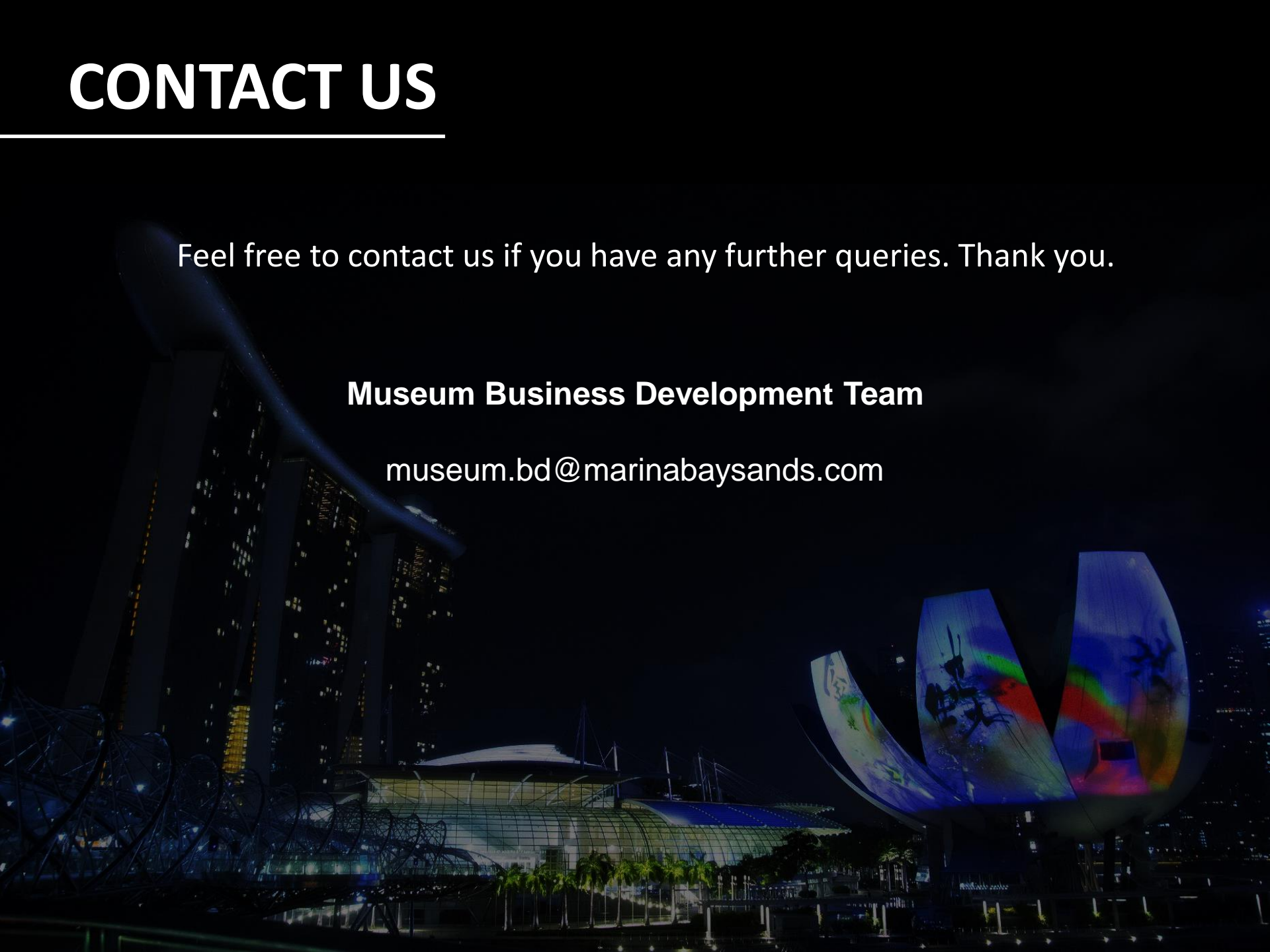
Venue	Cost	Area	Capacity
Level 4 ArtScience Cinema (65 seats) & partial Curiosity Cost to remove cinema seats applies	Whole Day : \$12,000+	Expression: 236m ² Curiosity (shared): 83m ²	65 seated pax
Level 1 Lobby	Whole Day : \$16,000+	525m²	190 standing pax
Basement 2 Circulation & Oculus	7pm to 11pm : \$16,000+	1080m²	500 standing pax
Basement 2 Lite Partial Circulation, Oculus & Rainbow Room	Whole Day : \$12,000+		200 - 250 standing pax
Bookings of L3 Exhibitions	7pm to 11pm : \$8,000+	1500m²	350 - 400 standing pax
Bookings of B2 Exhibitions Excluding Future World	7pm to 11pm : \$12,000+	1,200 - 1500m² (Exhibition Space)	250 - 300 standing pax
Bookings of Future World Exhibition	7pm to 11pm : \$16,000+	*Circulation space outside galleries available for use as well	

CONTACT US

Feel free to contact us if you have any further queries. Thank you.

Museum Business Development Team

museum.bd@marinabaysands.com





THANK YOU
