

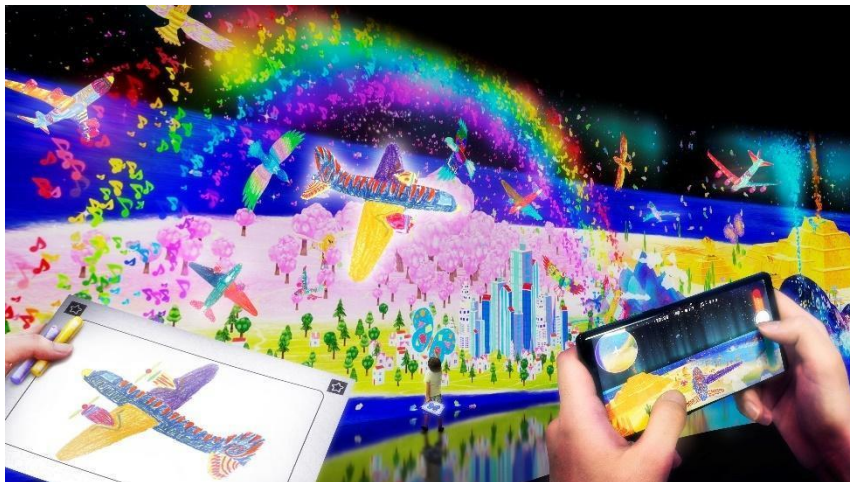
Press Release



FOR IMMEDIATE RELEASE

Marina Bay Sands and teamLab partnership reaches new heights with major revamps of Future World and Digital Light Canvas

Large-scale digital artworks will provide visitors all-new experiences in these popular landmarks at the Integrated Resort



One of the new artworks that will be unveiled at Future World: Where Art Meets Science

SINGAPORE (7 November 2022) – Marina Bay Sands and international Tokyo-based art collective teamLab are expanding their landmark collaboration with a major transformation of ArtScience Museum's permanent exhibit, *Future World: Where Art Meets Science*, and *Digital Light Canvas* by teamLab at The Shoppes – both of which will fully reopen to visitors on 26 November.

Known for its ever-changing artworks, *Future World* at ArtScience Museum is being transformed in one of its most dramatic redevelopments to date. Three new interactive artworks that rethink and showcase the endless possibilities of play will form a new gallery titled *Exploring New Frontiers*. Visitors can take a multi-sensory journey to the skies above in exploration of flight, continuing the exhibition's story of the harmonious co-existence between people and nature.

Press Release



As part of its transformation, *Digital Light Canvas by teamLab* is evolving further into a new nature-based adventure where visitors will be able to explore an ecosystem of flora and fauna. Various creatures will be brought to life by visitors' imaginations as they traverse their surroundings, add their own personal creations to the installation, and take them home as souvenirs.

"We are thrilled to deepen our collaboration with teamLab – one of our most beloved partners – with major new artworks at two of Marina Bay Sands' attractions. teamLab works at the cutting edge of immersive art, creating monumental works that have touched the hearts and minds of people all around the world. We are so pleased to collaborate with this visionary art collective once again to bring stunning interactive experiences to our audiences in Singapore from across the world. The transformation of *Digital Light Canvas by teamLab* into an even more interactive family-friendly attraction will surprise and delight visitors of all ages. The new *Exploring New Frontiers* gallery in *Future World* will also take the exhibition to bold new heights. We can't wait to welcome our visitors into a new world of immersive art at Marina Bay Sands," said Honor Harger, Vice President of ArtScience Museum and Attractions.

"*Future World* opened at ArtScience Museum in 2016 as teamLab's first-ever permanent exhibition. Six years on, this occasion marks the unveiling of new artworks within a brand-new gallery, alongside the transformation of *Digital Light Canvas by teamLab* since its launch at The Shoppes in 2017. Together with Marina Bay Sands, we look forward to continuously introducing more works and further enhancing them at both *Future World* and *Digital Light Canvas by teamLab*. By experiencing our installations, we also hope that visitors will be able to expand their values and gain new perceptions of the world," added Toshiyuki Inoko, Founder of teamLab.

Future World was created in collaboration with teamLab, the multi-award-winning international art collective renowned for its immersive artworks. The exhibition has captivated close to three million visitors over the past six years who have experienced its ever-changing galleries of artworks exploring the intersection of art, science, technology and the natural world. Currently, two zones, *Sanctuary* and *Park*, are temporarily closed for renovations, but visitors can continue to explore other areas of the exhibition – *City in a Garden* and *Space* – at a revised ticket price.

Digital Light Canvas by teamLab in The Shoppes at Marina Bay Sands offers visitors an unprecedented multi-sensory experience through the combination of cutting-edge technology that includes a patented 4D vision display, dynamic LED floor and a majestic 14-metre tall light sculptures that suspends from the ceiling. Featuring different interactive show modes accompanied by unique soundtracks, visitors can encounter a convergence of light and nature in this installation that has further established Marina Bay Sands as a leading destination for remarkable experiences.

Tickets and Reservations

Tickets for the transformed *Future World* and *Digital Light Canvas by teamLab* are now available for advance purchase at all Marina Bay Sands box offices and website. Due to limited capacity, guests are strongly encouraged to pre-purchase tickets online prior to their visit.

Press Release



For more information on *Future World* and *Digital Light Canvas* by teamLab, visit <https://www.marinabaysands.com/museum/exhibitions/future-world.html> and <https://www.marinabaysands.com/attractions/digital-light-canvas.html> respectively.

###

About Marina Bay Sands Pte Ltd

Marina Bay Sands is Asia's leading business, leisure and entertainment destination. The integrated resort features Singapore's largest hotel with over 2,200 luxurious rooms and suites, crowned by the spectacular Sands SkyPark and iconic infinity pool. Its stunning architecture and compelling programming, including state-of-the-art convention and exhibition facilities, Asia's best luxury shopping mall, world-class dining and entertainment, as well as cutting-edge exhibitions at ArtScience Museum, have transformed the country's skyline and tourism landscape since it opened in 2010.

Marina Bay Sands is dedicated to being a good corporate citizen to serve its people, communities and environment. As one of the largest players in hospitality, it employs nearly 10,000 Team Members across the property. It drives social impact through its community engagement programme, Sands Cares, and leads environmental stewardship through its global sustainability programme, Sands ECO360.

For more information, please visit www.marinabaysands.com

About ArtScience Museum

ArtScience Museum is a major cultural institution in Singapore that explores the intersection between art, science, technology and culture. It is the cultural component of Marina Bay Sands. Since its opening in February 2011, ArtScience Museum has staged large-scale exhibitions by some of the world's major artists, including Leonardo da Vinci, M.C. Escher, Salvador Dalí, Andy Warhol and Vincent Van Gogh, as well as exhibitions that explore aspects of science and technology – including particle physics, big data, robotics, palaeontology, marine biology and space science. For more information, please visit www.marinabaysands.com/museum.html

About teamLab

teamLab (f. 2001) is an international art collective. Their collaborative practice seeks to navigate the confluence of art, science, technology, and the natural world. Through art, the interdisciplinary group of specialists, including artists, programmers, engineers, CG animators, mathematicians, and architects, aims to explore the relationship between the self and the world, and new forms of perception.

In order to understand the world around them, people separate it into independent entities with perceived boundaries between them. teamLab seeks to transcend these boundaries in our perceptions of the world, of the relationship between the self and the world, and of the continuity of time. Everything exists in a long, fragile yet miraculous, borderless continuity.

teamLab: <https://www.teamlab.art/>

Instagram: <https://instagram.com/teamlab/>

facebook: <https://www.facebook.com/teamLab.inc>

twitter: https://twitter.com/teamLab_net

YouTube: <https://www.youtube.com/c/teamLabART>

Media Enquiries

Julia Tan: +65 8380 4031/ julia.tan@marinabaysands.com

Sarina Pushkarna: +65 9298 5728/ sarina.pushkarna@marinabaysands.com

For hi-res images, please click [here](#).

(Photo credit lines are as per indicated in the photo captions)